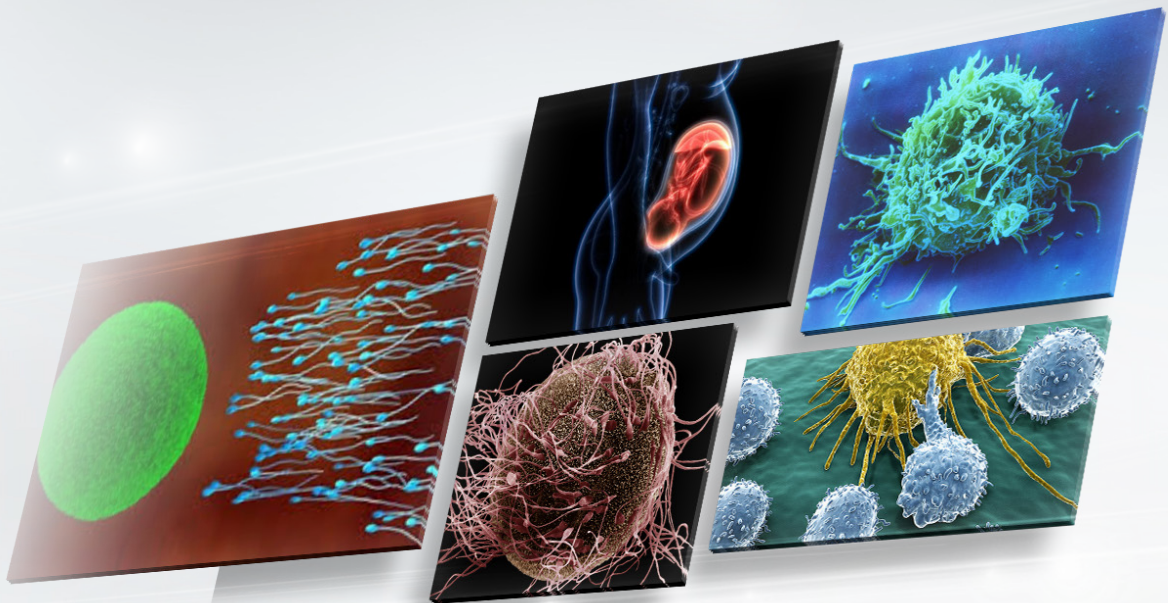




16TH
ESRI
CONGRESS

Annual Meeting of the European Society
for Reproductive Immunology

Du **29** mars
Au **01** avril **2022**



The early Immune dialogue between the embryo and the mother
Maternofoetal tolerance - recurrent miscarriages and environment
Immunology - preeclampsia and infection personalized reproductive medicine

Institut du Cerveau - ICM - *hôpital Pitié-Salpêtrière, 47 Bd de l'Hôpital, 75013 Paris*

International organizing committee :

Julia SZEKERES-BARTHO

Petra ARCK

Udo MARKERT

National organizing committee :

Nathalie LÉDÉE

Thierry FOURNIER

Olivier SANDRA



MatriceLAB
INNOVE

Information and registration : www.len-medical.fr/esri

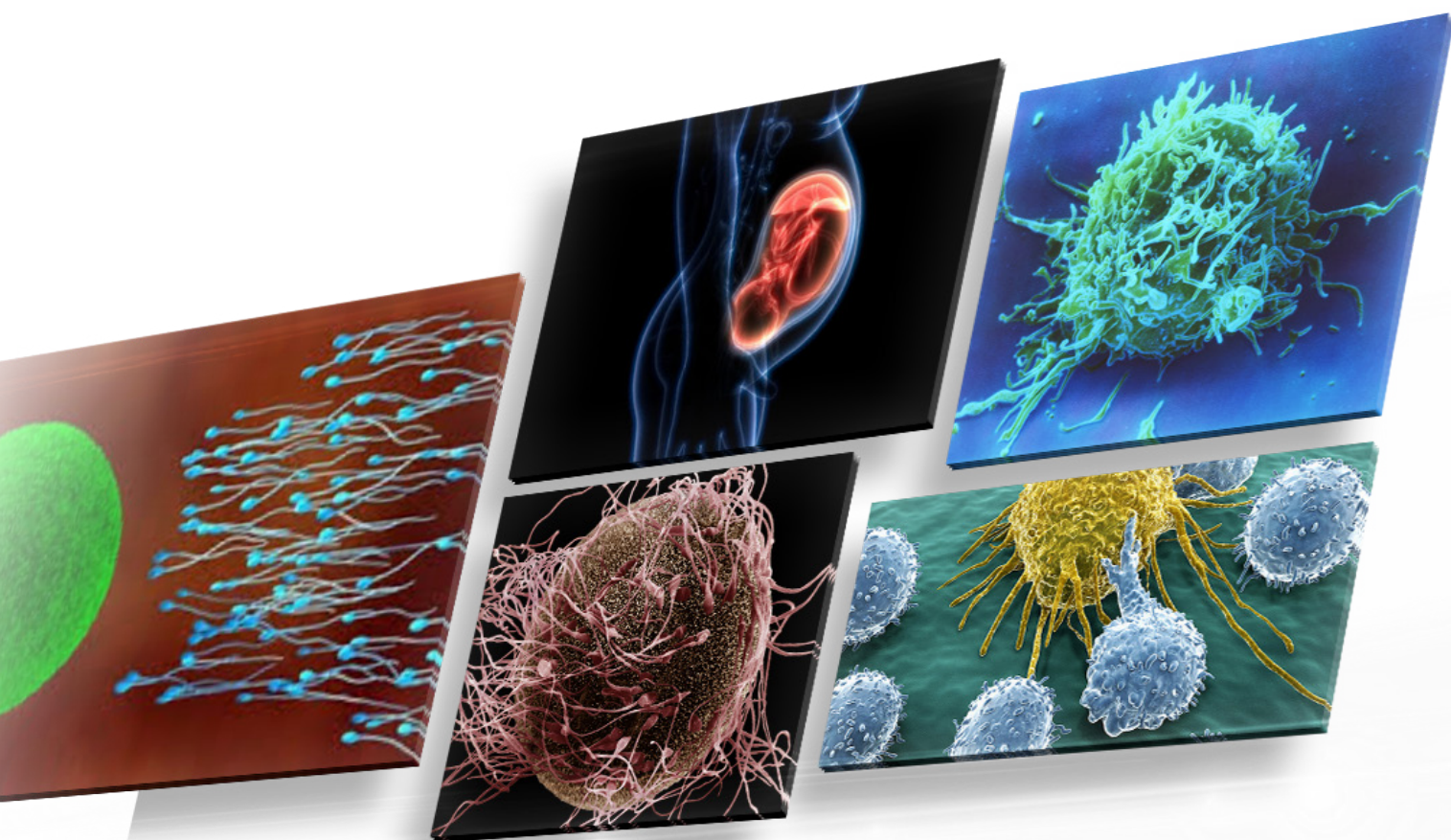
Organization : L.E.N. MÉDICAL - 56, bd de la Mission Marchand - CS 50062 - 92418 Courbevoie Cedex

EXPERTS

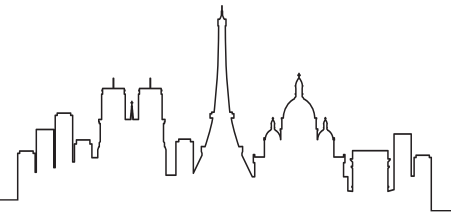


Petra **ARCK**, Hamburg
Kenneth **BEAMAN**, Chicago
Sandra **BLOIS**, Hamburg
Roberta **BULLA**, Trieste
Ole Bjarne **CHRISTIANSEN**, Copenhagen
Guy Nino **CASSUTO**, Paris
Francesco **COLUCCI**, Cambridge
Guillaume **DARRASSE-JÈZE**, Paris
Severine **DEGRELLE**, Paris
Anke **DIEMERT**, Hamburg
Michael **EIKMANS**, Leiden
Frida **ENTEZAMI**, Paris
Marijke **FAAS**, Groningen
Thierry **FOURNIER**, Paris
René **FRYDMAN**, Paris
Brice **GAUDILLIÈRE**, Stanford
Marie-Joëlle **GROS**, Paris
Delphine **HAOUZI**, Montpellier
Odile **HEIDMANN**, Paris
Udo **JESCHKE**, München
Alaa **KAZHALAWI**, Paris
David **KLATZMAN**, Paris
Maciej **KURPISZ**, Poznan
Joanne **KWAK-KIM**, Chicago
Richard **LEA**, Leicester
Edouard **LECARPENTIER**, Paris

Nathalie **LÉDÉE**, Paris
Udo **MARKERT**, Jena
Andreas **MEINHARDT**, Giessen
Arsène **MEKINIAN**, Paris
Hadia **MOINDJIE**, Poissy
Anne-Marie **MOULIN**, Paris
Marie-Pierre **PICCINI**, Florence
Olivier **PICONE**, Paris
Mona **RAHMATI**, London
Pierre-Yves **ROBILLARD**, La Réunion
Marta **RODRIGUEZ**, Lebanon, USA
Pierre **ROQUES**, Paris
Nathalie **ROUAS-FREISS**, Paris
Olivier **SANDRA**, Paris
Steven **SCHEPANSKI**, Hamburg
David **SHARKEY**, Adelaide
Julia **SZEKERES-BARTHO**, Pecs
Ann-Christin **TALLAREK**, Hamburg
Anne **TARRADE**, Paris
Bettina **TOTH**, Innsbruck
Vassilis **TSATSARIS**, Paris
Daniel **VAIMAN**, Paris
Marigoula **VARLA-LEFTHERIOTIS**, Athens
Thomas **VAUVERT F HVIID**, Roskilde
David **WILLIAMS**, London
Julien **ZUBER**, Paris



EDITORIAL



Pour la première fois de son histoire, le prochain Congrès européen d'Immunologie de la Reproduction se tiendra en France à Paris du 29 mars au 1^{er} avril à L'ICM. Le programme est très clairement translationnel, orienté pour favoriser la rencontre entre cliniciens et chercheurs afin de mieux construire ensemble l'innovation de demain. Les meilleurs immunologistes internationaux se succéderont pour nous parler du dialogue immunologique essentiel entre l'embryon et sa mère, et des conséquences. Des pathologies comme l'échec d'implantation, les fausses couches à répétition, l'accouchement prématuré ou la prééclampsie de même que l'impact de l'environnement seront disséqués sous un jour immunologique. Des avancées fantastiques permettent d'envisager des changements conceptuels majeurs qui auront des conséquences dans la médecine de demain tant en médecine de la reproduction qu'en obstétrique ou en santé publique.

Ce congrès couvrira ces champs nouveaux pour ouvrir l'horizon de nos pratiques médicales.

Le comité national et international de L'ESRI (*European Society of Reproductive Immunology*) vous invitent donc très chaleureusement au XVI^e Congrès d'Immunologie de la Reproduction. Venez nombreux !

For the first time in its history, the next European Congress of Reproductive Immunology will be held in Paris, France, from March 29 to April 1 at the ICM. The program is very clearly translational, oriented to promote the meeting between clinicians and researchers to better build together the innovation of tomorrow.

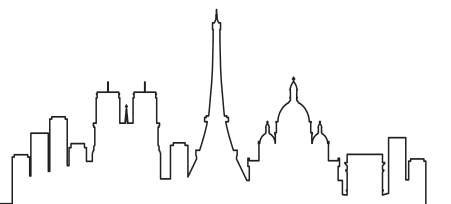
The best international immunologists will talk with us about the essential immunological dialogue between the embryo and its mother. Pathologies such as implantation failures, recurrent miscarriages, premature delivery or preeclampsia as well as the impact of environment will be dissected in an immunological light. Fantastic advances allow us to envisage major conceptual changes that will have consequences for tomorrow's medicine in reproductive medicine, obstetrics and public health. This congress will cover these new fields to open the horizon of our medical practices.

The national and international committee of the ESRI (European Society of Reproductive Immunology) warmly invite you to the XVIth Congress of Reproductive Immunology. Please come in great numbers !

AUDITORIUM

29TH TUESDAY MARCH 2022

DAY 0 MATERNOFETAL TOLERANCE - RECURRENT MISCARRIAGES AND ENVIRONMENT



16:00
16:30

WELCOME OF PARTICIPANTS

16:30
17:30

Welcome speech - Nathalie Lédée

Opening session : Reproductive immunology: a historical perspective on the "greffe admirable" - Anne-Marie Moulin - Directeur de recherche émérite CNRS, CNRS, SPHERE

Speech from Patients - Association BAMP - Marie-Joëlle Gros

Speech from Gerard Chauat's friends - Julia Szekeres-Bartho, Pierre-Yves Robillard

30TH WEDNESDAY 2022

MARCH

DAY 1 MATERNOFETAL TOLERANCE - RECURRENT MISCARRIAGES AND ENVIRONMENT



08:30
10:10

SYMPOSIUM I : THE EARLY IMMUNE DIALOGUE BETWEEN THE EMBRYO AND THE MOTHER

Chairs : Marigoula Varla-Leftheriotis | Udo Jeschke

8:30-8:50 Fetal-maternal immune interactions in pregnancy	Julia Szekeres-Bartho
8:50-9:00 Primary trophoblast cultures as model to study fetal-maternal interface: characterization of HLA profiles and immune cell interactions	Michael Eikmans
9:00-9:20 Trophoblast immune cell dialogue via extracellular vesicles and non-coding RNA	Udo Markert
9:20-9:30 Immune checkpoint ligands expressed by embryo-derived extracellular vesicles	Éva Görgey
9:30-9:50 Preimplantation factor modulates trophoblastic invasion throughout the decidualization of human endometrial stromal cells	Hadia Moindjie
9:50-10:10 Endogenous retroviruses and placenta: the HEMO protein	Odile Heidmann

10:10
10:30

COFFEE BREAK

10:35
12:25

SYMPOSIUM II : IMMUNOMECHANISM OF MATERNOFETAL TOLERANCE

Chairs : Marie Pierre-Piccinni | Michael Eikmans | Theodora Keramitsoglou

10:35-11:00 Repertory of circulating and uterine NK cells	Francesco Collucci
11:00-11:20 HLA-G : where are we ?	Nathalie Rouas-Freiss
11:20-11:30 Soluble HLA-G blood levels are not increased during ongoing pregnancy in women with a history of recurrent pregnancy loss	Juliette Krop
11:30-11:50 HLA-F and HLA-G in reproduction with a focus on fertility	Thomas Vauvert F Hviid
11:50-12:00 A firstborn boy and maternal HLA class II polymorphism negatively affect pregnancy prognosis in recurrent pregnancy loss	Caroline Nogaard-Pedersen
12:00-12:20 The possible role of IL-35 on the fetal allograft tolerance in human	Marie Pierre-Piccinni
12:20-12:30 Aging modifies endometrial dendritic cell function and tissue distribution of double negative T cells	Marta Rodriguez-Garcia

12:30
13:30

LUNCH

13:30
15:00

SYMPOSIUM III : RECURRENT MISCARRIAGES

Chairs : Ole Christiansen | Arsene Mekinian

13:30-13:50 Circulating immune biomarkers and recurrent pregnancy loss	Johanne Kwak-Kim
13:50-14:10 Immune profiling and recurrent miscarriages	Alaa Kazhalawi
14:10-14:30 Dendritic cells and tregs interplay at the maternal-fetal interface	Guillaume Darrasse-Jèze
14:30-14:40 Modification of peripheric Treg and CD56 levels in RIF women after egg-donation treated with GM-CSF and controls	Fabio Scarpellini Marco
14:40-14:50 LMWH-induced miRNA changes in peripheral blood mononuclear cells in pregnancies with unexplained recurrent pregnancy loss	Valentina Bruno
14:50-15:10 IL-2 in recurrent miscarriages: rational and preliminary result	David Klatzman

15:00
16:00

COFFEE BREAK : POSTER SESSION

16:00
18:00

SYMPOSIUM IV : PRETERM BIRTH AND IMMUNOLOGY

Chairs : Marijke Faas | Thierry Fournier

16:00-16:20 Association between biomarkers of the fetal immune system with birth weight and preterm delivery	Anke Diemert
16:20-16:30 Detection of microchimeric fetal cells in maternal peripheral blood during and after oocyte donation pregnancy	Kim Van Bentem
16:30-16:40 A combination of immune cell types identified through ensemble machine learning strategy detects altered profile in recurrent pregnancy loss strategy detects altered profile in recurrent pregnancy loss	Renate Van der Molen
16:40-17:00 HLA sensitisation and fetal losses	Julien Zuber
17:00-17:10 Immune cells at the maternal fetal interface during placental development: a single cell approach in mice	Ludivine Doridot
17:10-17:40 The potential interplay between the innate immune system and microbiota in uterine related pathology	Roberta Bulla
17:40-17:50 Prenatal transfer of pathogen-specific maternal microchimeric cells to the fetus	Dennis Yüzen

MatriceLAB
INNOVÉ

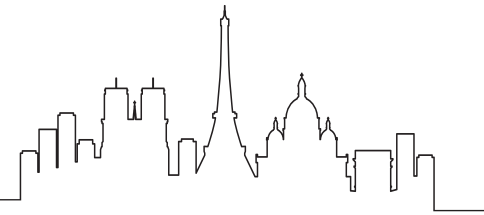
MatriceLAB
INNOVÉ

MERCK

FERRING
PHARMACEUTICALS

31TH THURSDAY MARCH 2022

AUDITORIUM



DAY 2 IMMUNOLOGY – PREECLAMPSIA AND INFECTION

08:30
09:55

SYMPOSIUM I : PREECLAMPSIA BIOMARKERS

Chairs: Vassilis Tsatsaris | Pierre-Yves Robillard | Thierry Fournier

08:30-08:50	Defining the galectin-1-glycan networks in preeclampsia	Sandra Blois
08:50-09:10	The preeclampsia gene STOX1 locally affects genome methylation in cells cells trophoblast	Daniel Vaiman
09:10-09:30	IFN, TORCH, IFITM and pregnancy	Thierry Fournier
09:30-09:45	Is secreted Corin a new marker of preeclampsia?	Severine Degrelle
09:45-10:00	Down regulation of CD24 in preeclampsia and its In-Vitro STOX1 model - a new target for immunotherapy of the syndrome? miscarriage/ infertility	Marei Sammar



10:00
10:30

COFFEE BREAK

10:30
12:10

SYMPOSIUM II : PREECLAMPSIA TREATMENTS

Chairs: Sandra Blois | Brice Gaudillière

10:30-10:50	Prevention of preeclampsia with aspirin. Where are we?	Vassilis Tsatsaris
10:50-11:10	Competitive Ligand-based approach using VEGF coated apheresis columns to improve the angiogenic balance in preeclampsia	Edouard Lecarpentier
11:10-11:20	Uptake of preeclampsia-derived EVs activates microglia in vitro	Julian A. Henao-Restreno
11:20-11:40	Pathophysiology and management of placental inflammatory syndromes	David Williams
11:45-12:10	HCG glycoforms: different sources of production for different biological functions throughout pregnancy	Thierry Fournier
12:00-12:10	Absence of maternal-derived gal-3 drives unusual placentation increasing the risk of FGR	Yiran Xie



12:10
13:10

LUNCH

13:40
15:15

SYMPOSIUM III : EPIDEMIOLOGY AND LONG-TERM CONSEQUENCE OF PREECLAMPSIA

Chairs: Daniel Vaiman | Julia Skekeres-Bartho | Vassilis Tsatsaris

13:40-14:10	A few debates in 2020 about preeclampsia. News on late preeclampsia (after 34 weeks, 90% of cases)	Pierre-Yves Robillard
14:10-14:30	Early Origins of Neurodevelopmental Disorders	Steven Schepanski
14:30-14:40	Regulatory T-cells undergo apoptosis during preeclampsia prevented by Gal-2	Laura Hahn
14:40-15:10	Immune clockwork in healthy and pathological pregnancies	Brice Gaudillière



15:15
16:15

COFFEE BREAK : POSTER SESSION

16:15
18:30

SYMPOSIUM IV : SARS COV-2 AND PREGNANCY

Chairs: Marta Rodriguez Garcia | Pierre Roques | Olivier Picone

16:15-16:35	Natural history of Sars-Cov-2 infection in pregnant women	Pierre Roques
16:35-16:50	Follow-up for pregnant women during the COVID-19 pandemic	Olivier Picone
16:50-17:10	COVID-19 and intriguing placental data	Ann-Christin Tallarek
17:10-17:30	Treatment of immunomodulation during pandemia in case of recurrent miscarriage/infertility	Joan Kwak-Kim
17:40-17:50	Evaluation of Sars-CoV-2 entry receptors in COVID-19 positive and negative placentae: correlation between expression and infectivity	Chiara Agostinis
17:50-18:00	Diminished humoral and cellular immune response in pregnant women upon vaccination against SARS-CoV-2 infection	Tayyip Emre Kehribar
18:00-18:10	Galectin-1 levels raise in maternal circulation upon SARS-CoV-2 vaccination/ infection during gestation	Fangqi Zhao
18:10-18:20	Blood sEVs from healthy and GDM patients modulate 1.1B4 pancreatic beta cell proliferation and metabolism	Rachel R. Zabel
18:20-18:30	Aggravated breast cancer progression in pregnant mice might be supported by alterations in the $\gamma\delta$ T cell compartment	Kristin Thiele



20:00

GALA DINER



MERCK

MERCK

MatriceLAB
INNOVE

09:00
10:40

SYMPOSIUM I : IMPACT OF THE ENVIRONMENT ON PREGNANCY AND PERSONALIZED REPRODUCTIVE MEDICINE

Chairs : Mona Rahmati | Olivier Sandra | Nathalie Lédée

9:00-9:20 Prenatal environmental challenges and children's health : mediators and mechanisms	Petra Arck
9:20-9:40 Impact of phthalates on human trophoblast differentiation and function	Severine Degrelle
9:40-10:00 Effects of F0 maternal diesel engine exhaust exposure during gestation on F1 and F2 offspring phenotype	Anne Tarrade
10:00-10:20 Reproductive function in a polluted world: lessons from animal models	Richard Lea
10:20-10:40 Prenatal acetaminophen exposure distorts ovarian macrophages with long lasting consequences for gonadal function	Vicky Bazzano

10:40
11:00

COFFEE BREAK

11:00
12:30

SYMPOSIUM II : ENVIRONMENT AND MALE INFERTILITY

Chairs : Maciej Kurpisz | Guy Cassuto

11:00-11:20 How immune cell phenotypes determine a region-specific immune response in the epididymis	Andreas Meinhardt
11:20-11:40 Molecular profiling of spermatozoa	Guy Nino Cassuto
11:40-11:50 Comparison of histone H3K4me3 between IVF and ICSI technologies and between boy and girl offspring	Huixia Yang
11:50-12:20 Personalized medicine in treatment of azoospermia: HLA puzzle	Maciej Kurpisz
12:10-12:30 Role of seminal plasma exposure on implantation	David Sharkey

12:30
13:30

LUNCH

13:30
15:45

SYMPOSIUM III : IMMUNOLOGY AND PERSONALIZED REPRODUCTIVE MEDICINE

Chairs : Petra Arck | René Frydman | Kenneth Beaman

13:45-14:05 The role of HLA and maternal-fetal histo-incompatibility in pregnancy outcome	Michael Eikmans
14:05-14:15 Placental inflammatory pathology lesions are specifically observed in uncomplicated pregnancies after ovocyte donation and are associated with fetal-maternal HLA mismatching	Xuezi Tian
14:15-14:35 Clinical usage of endometrial testing: experience of an "Implantation Clinic" in the UK	Mona Rahmati
14:35-14:55 Is the optimal time of embryo transfer need to be personalized : The Win-test	Frida Entezami
14:55-15:15 The endometrial immune profiling: Where are we after 10 years ?	Nathalie Lédée

15:15
15:45

COFFEE BREAK

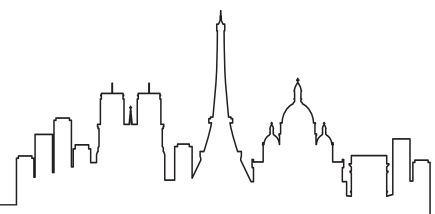
16:00
17:30

SYMPOSIUM IV : SELECTED PRESENTATION AND PRIZE

Prize Elsevier for young investigator (basic-clinical science)
Prize Elsevier for senior investigator

ABSTRACTS

[Submit your abstract : www.len-medical.fr/esri](http://www.len-medical.fr/esri)



How to submit

Authors may be allowed to submit their abstract online from December, 1st 2021 to January, 31 th 2022 without prior registration: extended abstract deadline untill february, 15th

Final selection for oral or poster selection and publication would require the registration of at least 1 presenting author to attend the meeting and present the work.

Notification of acceptance

Notices of poster acceptance, oral presentations will be emailed to the submitting authors by March, 1 rst 2022

Publication

Accepted abstract will be published by Elsevier in *Journal of Reproductive Immunology*

Category : Basic research / clinical research

Thema : Immune dialogue and fetal tolerance/preterm birth/recurrent miscarriages/preeclampsia/reproductive medicine/impact of environment and Sars-Cov2 in pregnancy

Presentation preference : select oral only, oral or poster, poster only, invited speaker

For invited speaker - you should use the invited speaker option

Are you candidate for the young investigator award : yes or no ?

Abstract format requirement

Begin your abstract with the abstract title, author's names, and author's affiliations. Underline the name of the presenting author. Abstracts should be structured and consist of no more than 500 words, and organized into four paragraphs labeled: Problem, Method of Study, Results and Conclusions.

Abstract Title - Maximum 20 words. Please capitalize the first letter of the first word. The remaining words should not be capitalized.

Authors and affiliation - You must enter the names of ALL AUTHORS (including yourself if you are an author) in the order in which you wish them to appear in the printed journal text. You will also need to include their institution, city, state and country. Author's names entered in any other section will NOT be printed in the author index or the final program.

Abstract Body - Please include your abstract body below (max 500 words). No tables or images will be allowed. Your abstract must be organized into four separate paragraphs:
Problem/Method of Study/Results/Conclusions

Permissions - Acknowledge author's permissions and authorize publication online in the journal.

Registration - Confirm that at least 1 presenting author will register for and attend the meeting to present the work.

ACCESS MAP



Institut du Cerveau - ICM - hôpital Pitié-Salpêtrière, 47 Bd de l'Hôpital, 75013 Paris

You can also benefit from special rates

You can benefit from a reduction on a return ticket on the Air France or KLM metropolitan network going up to 50% reduction, within the limit of seats available in Air France or KLM or approved points of sale.

For this special rate, do not forget to bring the following approval number:

38164AF from 19/03/2022 to 10/04/2022



ORGANISATION : L.E.N. MÉDICAL

Cécile GROGNARD & Inès DOS SANTOS
 56, bd de la Mission Marchand
 CS 50062
 92418 Courbevoie cedex
 Tél. : 01 47 55 31 31

L.E.N. MEDICAL



< salons@len-medical.fr >